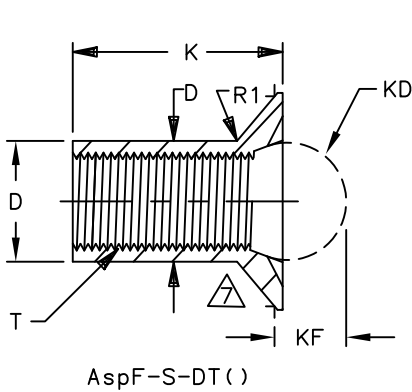
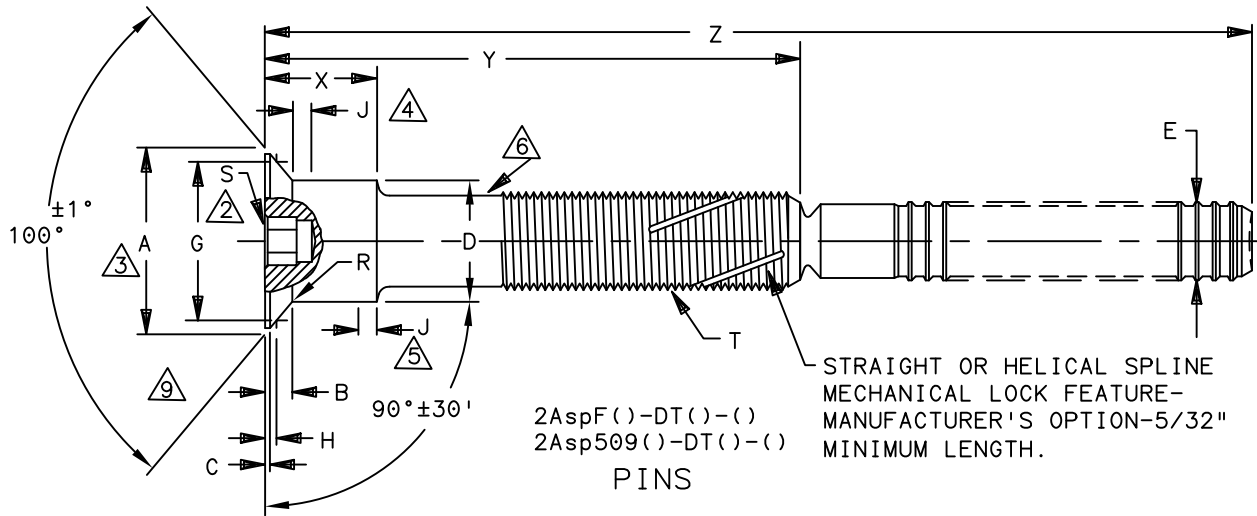
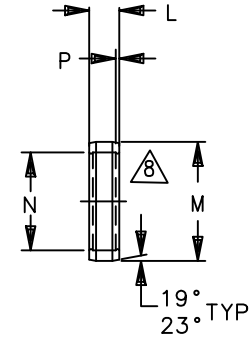
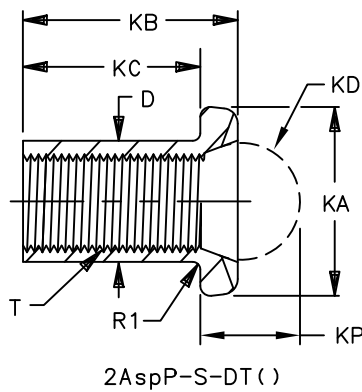


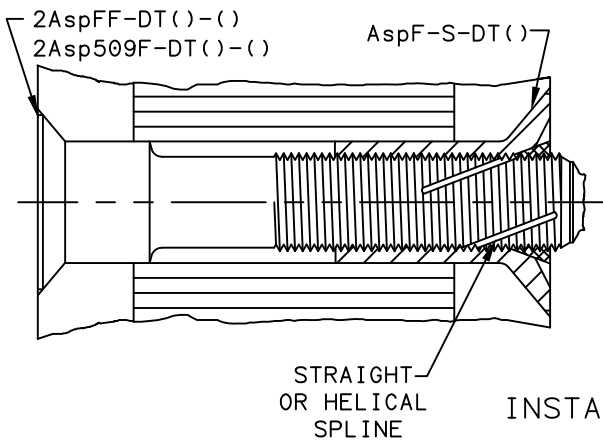
THIS DRAWING, THE STRUCTURAL DESIGN DISCLOSED THEREIN AND THE TECHNICAL DATA AND ENGINEERING SERVICE REPRESENTED THEREBY ARE THE EXCLUSIVE PROPERTY OF HUCK INTERNATIONAL INCORPORATED.



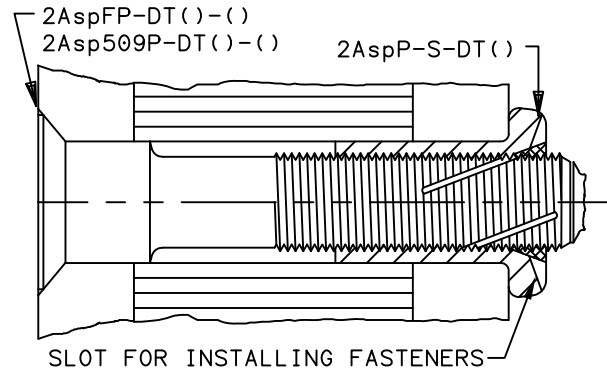
SLEEVES



LOCK COLLAR



INSTALLED FASTENER



DIMENSIONS IN INCHES

PROCUREMENT SPECIFICATION: C2005
©1967, 2020 HUCK INTERNATIONAL, INC., ALL RIGHTS RESERVED.

DRAWN BY	DH	FSCM (Cage Code) 17446 - Carson
CHECKED BY	MM	

J5 REVISED COMPANY LOGO & UPDATED TRADEMARK INFORMATION. (REF. ECR2670)

ISSUED	11/01/67
REVISED	04/01/2020
PAGE	1 OF 6

2Asp® FASTENER, ADJUSTABLE PRELOAD-SELF
SUSTAINING-POSITIVE MECHANICAL LOCK,
8740 ALLOY STEEL (108 KSI SHEAR)

2Asp()-DT()-() PINS
AspF-S-DT() &
2AspP-S-DT() SLEEVES
Asp-LC-2AC LOCK COLLAR
ASP102



Howmet Fastening Systems
 Carson Operations
 900 E. Watson Center Road
 Carson, California 90745 U.S.A.

Phone (310) 830-8200
 HFS_Carson_Engineering@howmet.com

ASP®

ENGINEERING
 STANDARD

THIS DRAWING, THE STRUCTURAL DESIGN DISCLOSED THEREIN AND THE TECHNICAL DATA AND ENGINEERING SERVICE REPRESENTED THEREBY ARE THE EXCLUSIVE PROPERTY OF HUCK INTERNATIONAL INCORPORATED.

Asp PIN PART NUMBER	NOM SIZE	A DIA MAX	B HEAD HEIGHT MAX	C MAX	D DIA +.0020 -.0000	E MAX DIA	G GAGE DIA ±.0001	H GAGE HEIGHT		J MAX	MIN ULT. TENSILE Δ		HOLE LIMITS +.0045 -.0000
								MAX	MIN		WITH AspF-S-DT	WITH 2AspP-S-DT	
2AspFF-DT05 & 2AspFP-DT05	11/64	.2511	.0339	.010	.1692	.092	.2027	.0220	.0186	.026	TBD	TBD	.1720
2Asp509F-DT05 & 2Asp509P-DT05		.3267	.0657				.2831	.0201	.0165		1000		
2AspFF-DT06 & 2AspFP-DT06	13/64	.2988	.0408	.013	.2005	.132	.2440	.0250	.0210	.031	1400	1400	.2035
2Asp509F-DT06 & 2Asp509P-DT06		.3805	.0751				.3271	.0243	.0205		2210	1800	
2AspFF-DT08 & 2AspFP-DT08	17/64	.3922	.0538	.017	.2630	.174	.3314	.0278	.0232	.042	2550	2550	.2660
2Asp509F-DT08 & 2Asp509P-DT08		.5010	.0994				.4319	.0310	.0270		4080	4080	
2AspFF-DT10 & 2AspFP-DT10	21/64	.4713	.0608	.020	.3255	.194	.4046	.0305	.0255	.052	4000	4000	.3285
2Asp509F-DT10 & 2Asp509P-DT10		.6275	.1263				.5450	.0367	.0325		5350	5350	

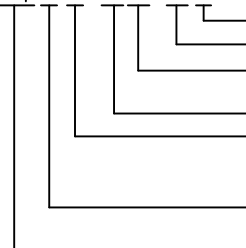
Asp PIN PART NUMBER	NOM SIZE	SLEEVES								LOCK COLLAR				R RAD	R1 RAD	S HEX Δ	T MODIFIED THREAD	MIN ULT SHEAR Δ
		K ±.005	KA DIA	KB ±.005	KC ±.005	KD BALL	KF ±.0040	KP ±.0040	L ±.005	M DIA MAX	N DIA MAX	P MAX						
2AspFF-DT05 & 2AspFP-DT05	11/64	.200	—	—	—	—	—	—	.050	.164	.128	.015	.020 .010	.025 .015	5/64	.1250-48 UNRS-3	550	
2Asp509F-DT05 & 2Asp509P-DT05																		
2AspFF-DT06 & 2AspFP-DT06	13/64	.175	.332 .305	.263	.200	13/64	.1430	.1835	.050	.200	.164	.015	.020 .010	.025 .015	5/64	.1640-56 UNRS-3	1320	
2Asp509F-DT06 & 2Asp509P-DT06																		
2AspFF-DT08 & 2AspFP-DT08	17/64	.229	.432 .400	.324	.229	17/64	.1837	.2505	.065	.262	.216	.022	.025 .010	.030 .020	3/32	.2160-48 UNRS-3	2550	
2Asp509F-DT08 & 2Asp509P-DT08																		
2AspFF-DT10 & 2AspFP-DT10	21/64	.285	.522 .480	.410	.285	5/16	.2133	.3045	.083	.314	.253	.028	.030 .010	.040 .030	1/8	.2500-40 UNRS-3	3520	
2Asp509F-DT10 & 2Asp509P-DT10																		

- Δ MINIMUM ULTIMATE TENSILE STRENGTH, OF INSTALLED FASTENER. (IN POUNDS)
(UPPER VALUES - 2AspF & 2AspP; LOWER VALUES - 2Asp509).
- Δ HEX SOCKET.
- Δ MAXIMUM THEORETICAL INTERSECTION DIAMETER.
- Δ MAXIMUM LENGTH OF PERMISSIBLE TAPER. DIAMETER MAY BE .002 GREATER THAN "D"
WHEN MEASURED FROM TANGENCY OF HEAD TO SHANK DIAMETER RADIUS.
- Δ MAXIMUM LENGTH OF PERMISSIBLE UNDERFILL.
- Δ SUFFICIENT THREAD LENGTH FOR PROPER INSTALLATION THROUGH COMPLETE GRIP RANGE.
A VARIABLE LENGTH UNTHREADED AREA MAY EXIST BETWEEN THE "X" LENGTH AND THREAD.
- Δ FLUSH SLEEVE HEAD DIMENSIONS SAME AS 2Asp509F PIN.
- Δ MANUFACTURER'S OPTION TO SUPPLY SOLID OR SPLIT LOCK COLLAR.
- Δ CONICAL SURFACE OF FLUSH HEADS TO BE CONCENTRIC WITH "D" DIAMETER WITHIN .003 FIR.
- Δ MINIMUM SHEAR STRENGTH OF INSTALLED FASTENER TESTED IN SINGLE SHEAR,
WHEN SHEAR PLANE FALLS IN PIN THREADED SECTION ONLY.

MATERIAL: PIN & SLEEVE - AISI 8740 ALLOY STEEL PER CHEMISTRY OF MIL-S-6049.
 LOCK COLLAR - 2219-T6 ALUMINUM ALLOY PER CHEMISTRY OF QQ-A-430.
 HEAT TREATMENT: PIN & SLEEVE - 180/200 KSI TENSILE. MINIMUM SHEAR STRENGTH 108 KSI.
 FINISH: PIN & SLEEVE - NO SUFFIX - CADMIUM PLATE-DICHROMATE QQ-P-416, TYPE II, CLASS 2.
 SUFFIX "NL" - NICKEL PLATE PER QQ-N-290.
 LOCK COLLAR - CHEMICAL SURFACE TREAT PER SPECIFICATION MIL-C-5541.
 LUBRICATION: SLEEVE - CETYL ALCOHOL (CHLORINE FREE) PER MIL-L-87132A.
 IDENTIFICATION: - SLEEVE: HUCK SYMBOL (X).
 PIN: HUCK SYMBOL (X).

INSTALLATION: IN ACCORDANCE WITH HUCK BROCHURE HCB-135.

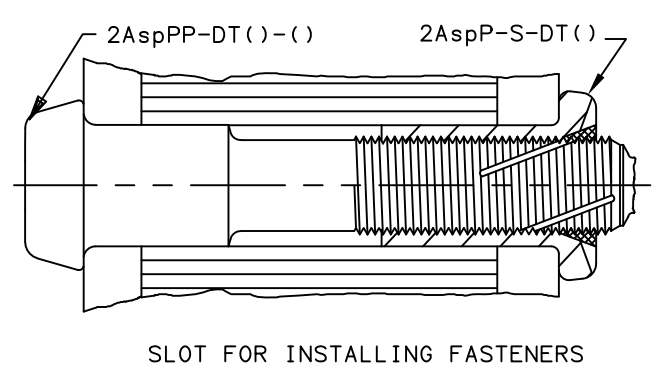
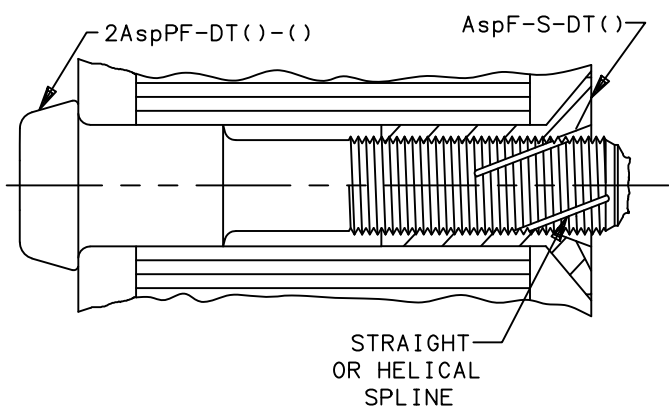
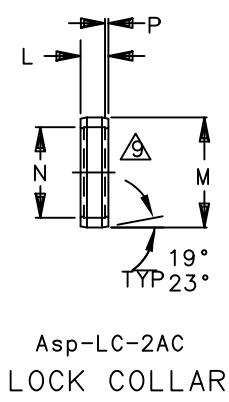
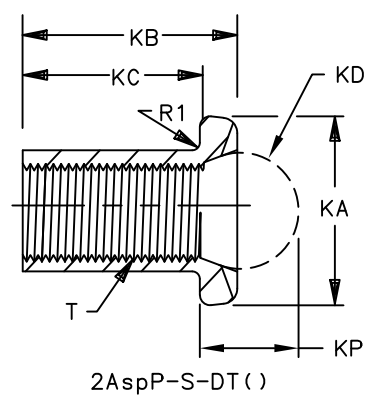
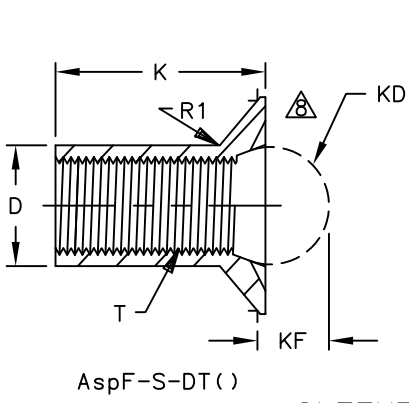
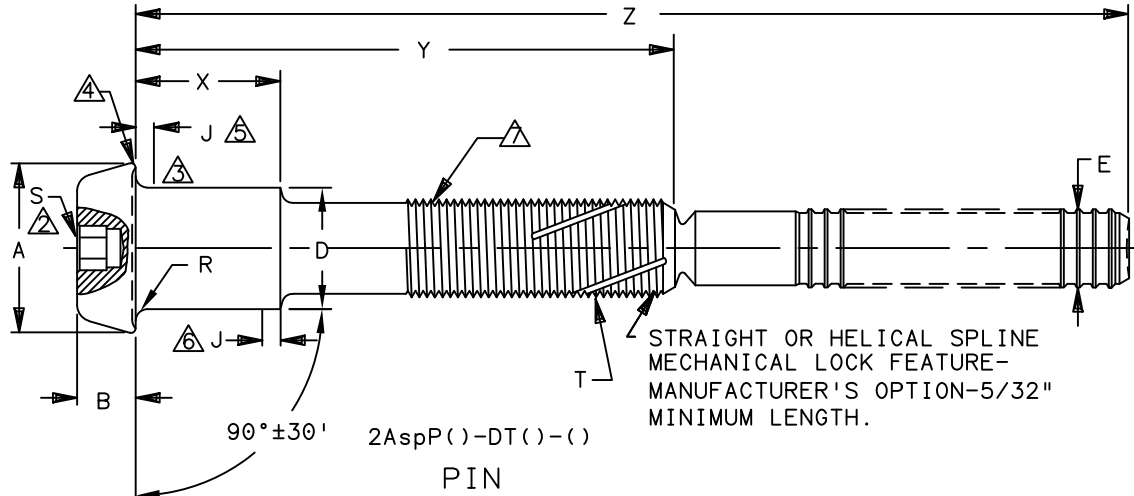
PART NO. 2Asp()()-DT06-06()

EXAMPLE:  FINISH SUFFIX (SEE FINISH CODE).
 GRIP NUMBER IN 16TH INCHES.
 NOMINAL SHANK DIAMETER (1/64 OVERSIZE)
 IN 32ND INCHES.
 MATERIAL DESIGNATOR - AISI 8740 ALLOY STEEL.
 SLEEVE HEAD STYLE DESIGNATOR:
 "F" = FLUSH HEAD SLEEVE (100°).
 "P" = PROTRUDING SLEEVE.
 "F" = 100° REDUCED SHEAR FLUSH HEAD PIN.
 "509" = 100° FLUSH HEAD PIN.
 DESIGNATES ADJUSTABLE PRELOAD SELF
 SUSTAINING POSITIVE MECHANICAL LOCK.

DIMENSIONS IN INCHES

J5	REVISED COMPANY LOGO & UPDATED TRADEMARK INFORMATION. (REF. ECR2670)		
ISSUED	11/01/67	2Asp® FASTENER, ADJUSTABLE PRELOAD-SELF SUSTAINING-POSITIVE MECHANICAL LOCK, 8740 ALLOY STEEL (108 KSI SHEAR)	2Asp()()-DT()()- PINS AspF-S-DT() & 2AspP-S-DT() SLEEVES Asp-LC-2AC LOCK COLLAR
REVISED	04/01/2020		
PAGE	2 OF 6		ASP102

THIS DRAWING, THE STRUCTURAL DESIGN DISCLOSED THEREIN AND THE TECHNICAL DATA AND ENGINEERING SERVICE REPRESENTED THEREBY ARE THE EXCLUSIVE PROPERTY OF HUCK INTERNATIONAL INCORPORATED.



INSTALLED FASTENERS

DIMENSIONS IN INCHES

J5		REVISED COMPANY LOGO & UPDATED TRADEMARK INFORMATION. (REF. ECR2670)	
ISSUED	11/01/67	2Asp® FASTENER, ADJUSTABLE PRELOAD-SELF SUSTAINING-POSITIVE MECHANICAL LOCK, 8740 ALLOY STEEL (108 KSI SHEAR)	2Asp(-)DT(-) PIN AspF-S-DT() & 2AspP-S-DT() SLEEVES Asp-LC-2AC LOCK COLLAR
REVISED	04/01/2020		
PAGE	3 OF 6		



Howmet Fastening Systems
 Carson Operations
 900 E. Watson Center Road
 Carson, California 90745 U.S.A.

Phone (310) 830-8200
 HFS_Carson_Engineering@howmet.com

ASP®

ENGINEERING
 STANDARD

THIS DRAWING, THE STRUCTURAL DESIGN DISCLOSED THEREIN AND THE TECHNICAL DATA AND ENGINEERING SERVICE REPRESENTED THEREBY ARE THE EXCLUSIVE PROPERTY OF HUCK INTERNATIONAL INCORPORATED.

Asp PIN PART NUMBER	NOM SIZE	A DIA MAX	B HEAD HEIGHT MAX	D DIA + .0020 - .0000	E MAX DIA	J MAX	SLEEVES						
							K ± .005	KA DIA	KB ± .005	KC ± .005	KD BALL	KF ± .0040	KP ± .0040
2AspPF-DT05-() 2AspPP-DT05-()	11/64	TBD	TBD	.1692	.092	.026	.200	—	—	—	—	—	—
2AspPF-DT06-() 2AspPP-DT06-()	13/64	.302	.063	.2005	.132	.031	.175	.332 .305	.263	.200	13/64	.1430	.1835
2AspPF-DT08-() 2AspPP-DT08-()	17/64	.377	.081	.2630	.174	.042	.229	.432 .400	.324	.229	17/64	.1837	.2505
2AspPF-DT10-() 2AspPP-DT10-()	21/64	.471	.100	.3255	.194	.052	.285	.522 .480	.410	.285	5/16	.2133	.3045

Asp PIN PART NUMBER	NOM SIZE	LOCK COLLAR				R RAD	R1 RAD	S HEX △	T MODIFIED THREAD	U △	MIN ULT TENSILE △	HOLE LIMITS + .0045 - .0000
		L ± .005	M DIA	N DIA	P MAX							
2AspPF-DT05-() 2AspPP-DT05-()	11/64	.050	.164 .160	.128 .125	.015 .008	.020 .010	.025 .015	5/64	.1250-48 UNS-3	550	TBD	.172
2AspPF-DT06-() 2AspPP-DT06-()	13/64	.050	.200 .195	.164 .161	.015 .008	.020 .010	.025 .015	5/64	.1640-56 UNS-3	1320	1400	.203
2AspPF-DT08-() 2AspPP-DT08-()	17/64	.065	.262 .256	.216 .213	.022 .013	.025 .010	.030 .020	3/32	.2160-48 UNS-3	2550	2550	.266
2AspPF-DT10-() 2AspPP-DT10-()	21/64	.083	.314 .304	.253 .248	.028 .018	.030 .010	.040 .030	1/8	.2500-40 UNS-3	3520	4000	.328

- ① MINIMUM ULTIMATE TENSILE STRENGTH, OF INSTALLED FASTENER. (IN POUNDS)
- ② HEX SOCKET.
- ③ SQUARENESS BETWEEN BEARING SURFACE OF PERMISSIBLE HEAD AND "D" DIAMETER TO BE WITHIN ±30'.
- ④ NATURAL FLOW OF MATERIAL.
- ⑤ MAXIMUM LENGTH OF PERMISSIBLE TAPER. DIAMETER MAY BE .002 GREATER THAN "D" WHEN MEASURED FROM TANGENCY OF HEAD TO SHANK DIAMETER RADIUS.
- ⑥ MAXIMUM LENGTH OF PERMISSIBLE UNDERFILL.
- ⑦ SUFFICIENT THREAD LENGTH FOR PROPER INSTALLATION THROUGH COMPLETE GRIP RANGE. A VARIABLE LENGTH UNTHREADED AREA MAY EXIST BETWEEN THE "X" LENGTH AND THREAD.
- ⑧ FLUSH SLEEVE HEAD DIMENSIONS SAME AS 2Asp509F PIN.
- ⑨ MANUFACTURER'S OPTION TO SUPPLY SOLID OR SPLIT LOCK COLLAR.
- ⑩ MINIMUM SHEAR STRENGTH OF INSTALLED FASTENER TESTED IN SINGLE SHEAR, WHEN SHEAR PLANE FALLS IN PIN THREADED SECTION ONLY.

MATERIAL: PIN & SLEEVE - AISI 8740 ALLOY STEEL PER CHEMISTRY OF MIL-S-6049.
 LOCK COLLAR - 2219-T6 ALUMINUM ALLOY PER CHEMISTRY OF QQ-A-430.
 HEAT TREATMENT: PIN & SLEEVE - 180/200 KSI TENSILE.
 MINIMUM SHEAR STRENGTH 108 KSI.
 FINISH: PIN & SLEEVE - NO SUFFIX - CADMIUM PLATE-DICHROMATE QQ-P-416, TYPE II, CLASS 2.
 SUFFIX "NL" - NICKEL PLATE PER QQ-N-290.
 LOCK COLLAR - CHEMICAL SURFACE TREAT PER SPECIFICATION MIL-C-5541.
 LUBRICATION: SLEEVE - CETYL ALCOHOL (CHLORINE FREE) PER MIL-L-87132A.
 IDENTIFICATION: - SLEEVE: HUCK SYMBOL (X)
 PIN: HUCK SYMBOL (X)

INSTALLATION: IN ACCORDANCE WITH HUCK BROCHURE HCB-135.

PART NO. 2AspP()-DT06-06()

EXAMPLE: FINISH SUFFIX (SEE FINISH CODE).
 GRIP NUMBER IN 16TH INCHES.
 NOMINAL SHANK DIAMETER (1/64 OVERSIZE) IN 32ND INCHES.
 MATERIAL DESIGNATOR - AISI 8740 ALLOY STEEL.
 SLEEVE HEAD STYLE DESIGNATOR:
 "F" = FLUSH HEAD SLEEVE 100°.
 "P" = PROTRUDING HEAD SLEEVE.
 "P" = PROTRUDING HEAD PIN.
 DESIGNATES PIN, ADJUSTABLE PRELOAD-SELF SUSTAINING-POSITIVE MECHANICAL LOCK.

DIMENSIONS IN INCHES

J5 REVISED COMPANY LOGO & UPDATED TRADEMARK INFORMATION. (REF. ECR2670)

ISSUED	11/01/67	2Asp® FASTENER, ADJUSTABLE PRELOAD-SELF SUSTAINING-POSITIVE MECHANICAL LOCK, 8740 ALLOY STEEL (108 KSI SHEAR)	2AspP()-DT()-() PINS AspF-S-DT() & 2AspP-S-DT() SLEEVES Asp-LC-2AC LOCK COLLAR
REVISED	04/01/2020		ASP102
PAGE	4 OF 6		



Howmet Fastening Systems
 Carson Operations
 900 E. Watson Center Road
 Carson, California 90745 U.S.A.

Phone (310) 830-8200
 HFS_Carson_Engineering@howmet.com

ASP®

ENGINEERING
 STANDARD

THIS DRAWING, THE STRUCTURAL DESIGN DISCLOSED THEREIN AND THE TECHNICAL DATA AND ENGINEERING SERVICE REPRESENTED THEREBY ARE THE EXCLUSIVE PROPERTY OF HUCK INTERNATIONAL INCORPORATED.

2AspFF-DT()-(), 2Asp509F-DT()-() & 2AspPF-DT()-()
 THESE DIMENSIONS ARE FOR PINS USING FLUSH SLEEVES.
 FOR PINS USING PROTRUDING SLEEVES SEE SHEET 6 OF 6.

GRIP NUMBER TABULATION														
GRIP DASH NO.	DESIGN GRIP RANGE		05 (11/64) DIA			06 (13/64) DIA			08 (17/64) DIA			10 (21/64) DIA		
	MIN.	MAX.	X	Y	Z	X	Y	Z	X	Y	Z	X	Y	Z
			+ .005 - .010	± .010	+ .125 - .000	+ .005 - .010	± .010	+ .125 - .000	+ .005 - .010	± .010	+ .125 - .000	+ .005 - .010	± .010	+ .125 - .000
05	.251	.312	—	—	—	—	.342	1.09	—	—	—	—	—	—
06	.313	.375	.090	.405	1.16	.090	.405	1.16	—	—	—	—	—	—
07	.376	.438	.150	.468	1.22	.150	.468	1.22	.090	.478	1.38	—	—	—
08	.439	.500	.180	.530	1.28	.180	.530	1.28	.150	.540	1.44	—	—	—
09	.501	.562	.180	.592	1.34	.180	.592	1.34	.180	.602	1.50	.156	.607	1.63
10	.563	.625	.180	.655	1.41	.180	.655	1.41	.180	.665	1.57	.218	.670	1.69
11	.626	.688	.180	.718	1.47	.180	.718	1.47	.180	.728	1.63	.281	.732	1.75
12	.689	.750	.180	.780	1.53	.180	.780	1.53	.180	.790	1.69	.312	.795	1.82
13	.751	.812	.180	.842	1.59	.180	.842	1.59	.180	.852	1.75	.312	.857	1.88
14	.813	.875	.180	.905	1.66	.180	.905	1.66	.180	.915	1.82	.312	.920	1.94
15	.876	.938	.180	.968	1.72	.180	.968	1.72	.180	.978	1.88	.312	.982	2.00
16	.939	1.000	.180	1.030	1.78	.180	1.030	1.78	.180	1.040	1.94	.312	1.045	2.07
17	1.001	1.062	.180	1.092	1.84	.180	1.092	1.84	.180	1.102	2.00	.312	1.107	2.13
18	1.063	1.125	.180	1.155	1.91	.180	1.155	1.91	.180	1.165	2.07	.312	1.170	2.19
19	1.126	1.188	.180	1.218	1.97	.180	1.218	1.97	.180	1.228	2.13	.312	1.232	2.25
20	1.189	1.250	.180	1.280	2.03	.180	1.280	2.03	.180	1.290	2.19	.312	1.295	2.32
21	1.251	1.312	.180	1.342	2.09	.180	1.342	2.09	.180	1.352	2.25	.312	1.357	2.38
22	1.313	1.375	.180	1.405	2.16	.180	1.405	2.16	.180	1.415	2.32	.312	1.420	2.44
23	1.376	1.438	.180	1.468	2.22	.180	1.468	2.22	.180	1.478	2.38	.312	1.482	2.50
24	1.439	1.500	.180	1.530	2.28	.180	1.530	2.28	.180	1.540	2.44	.312	1.545	2.57
25	1.501	1.562	.180	1.592	2.34	.180	1.592	2.34	.180	1.602	2.50	.312	1.607	2.63
26	1.563	1.625	.180	1.655	2.41	.180	1.655	2.41	.180	1.665	2.57	.312	1.670	2.69
27	1.626	1.688	.180	1.718	2.47	.180	1.718	2.47	.180	1.728	2.63	.312	1.732	2.75
28	1.689	1.750	.180	1.780	2.53	.180	1.780	2.53	.180	1.790	2.69	.312	1.795	2.82
29	1.751	1.812	.180	1.842	2.59	.180	1.842	2.59	.180	1.852	2.75	.312	1.857	2.88
30	1.813	1.875	.180	1.905	2.66	.180	1.905	2.66	.180	1.915	2.82	.312	1.920	2.94
31	1.876	1.938	.180	1.968	2.72	.180	1.968	2.72	.180	1.978	2.88	.312	1.982	3.00
32	1.939	2.000	.180	2.030	2.78	.180	2.030	2.78	.180	2.040	2.94	.312	2.045	3.07
33	2.001	2.062	.180	2.092	2.84	.180	2.092	2.84	.180	2.102	3.00	.312	2.107	3.13
34	2.063	2.125	.180	2.155	2.91	.180	2.155	2.91	.180	2.165	3.07	.312	2.170	3.19
35	2.126	2.188	.180	2.218	2.97	.180	2.218	2.97	.180	2.228	3.13	.312	2.232	3.25
36	2.189	2.250	.180	2.280	3.03	.180	2.280	3.03	.180	2.290	3.19	.312	2.295	3.32
37	2.251	2.312	.180	2.342	3.09	.180	2.342	3.09	.180	2.352	3.25	—	—	—
38	2.313	2.375	.180	2.405	3.16	.180	2.405	3.16	.180	2.415	3.32	—	—	—
39	2.376	2.438	.180	2.468	3.22	.180	2.468	3.22	.180	2.478	3.38	—	—	—
40	2.439	2.500	.180	2.530	3.28	.180	2.530	3.28	.180	2.540	3.44	—	—	—

DIMENSIONS IN INCHES



NOT AVAILABLE IN 2Asp509F-DT06-05 OR 2Asp509F-DT06-06, AND
 2Asp509F-DT08-07. OMIT "X" SHOULD R FOR 2AspFF-DT06-05.

J5

REVISED COMPANY LOGO & UPDATED TRADEMARK INFORMATION. (REF. ECR2670)

ISSUED	11/01/67
REVISED	04/01/2020
PAGE	5 OF 6

2Asp® FASTENER, ADJUSTABLE PRELOAD-SELF
 SUSTAINING-POSITIVE MECHANICAL LOCK,
 8740 ALLOY STEEL (108 KSI SHEAR)

2Asp()-DT()-() PINS
 AspF-S-DT() &
 2AspP-S-DT() SLEEVES
 Asp-LC-ZAC LOCK COLLAR

ASP102



Howmet Fastening Systems
 Carson Operations
 900 E. Watson Center Road
 Carson, California 90745 U.S.A.

Phone (310) 830-8200
 HFS_Carson_Engineering@howmet.com

ASP®

ENGINEERING
 STANDARD

THIS DRAWING, THE STRUCTURAL DESIGN DISCLOSED THEREIN AND THE TECHNICAL DATA AND ENGINEERING SERVICE REPRESENTED THEREBY ARE THE EXCLUSIVE PROPERTY OF HUCK INTERNATIONAL INCORPORATED.

2AspFP-DT()-(), 2Asp509P-DT()-() & 2AspPP-DT()-()
 THESE DIMENSIONS ARE FOR PINS USING PROTRUDING SLEEVES.
 FOR PINS USING FLUSH SLEEVES SEE SHEET 5 OF 6.

GRIP NUMBER TABULATION														
GRIP DASH NO.	DESIGN GRIP RANGE		Ø5 (11/64) DIA			Ø6 (13/64) DIA			Ø8 (17/64) DIA			10 (21/64) DIA		
	MIN.	MAX.	X	Y	Z	X	Y	Z	X	Y	Z	X	Y	Z
			+ .005 - .010	± .010	+ .125 - .000	+ .005 - .010	± .010	+ .125 - .000	+ .005 - .010	± .010	+ .125 - .000	+ .005 - .010	± .010	+ .125 - .000
05	.251	.312	—	—	—	—	.405	1.16	—	—	—	—	—	—
06	.313	.375	.090	.468	1.22	.090	.468	1.22	—	—	—	—	—	—
07	.376	.438	.150	.530	1.28	.150	.530	1.28	.090	.572	1.47	—	—	—
08	.439	.500	.180	.592	1.34	.180	.592	1.34	.150	.635	1.53	—	—	—
09	.501	.562	.180	.655	1.41	.180	.655	1.41	.180	.697	1.59	.156	.732	1.75
10	.563	.625	.180	.718	1.47	.180	.718	1.47	.180	.760	1.65	.218	.795	1.82
11	.626	.688	.180	.780	1.53	.180	.780	1.53	.180	.822	1.72	.281	.857	1.88
12	.689	.750	.180	.842	1.59	.180	.842	1.59	.180	.885	1.78	.312	.920	1.94
13	.751	.812	.180	.905	1.66	.180	.905	1.66	.180	.947	1.84	.312	.982	2.00
14	.813	.875	.180	.968	1.72	.180	.968	1.72	.180	1.010	1.90	.312	1.045	2.07
15	.876	.938	.180	1.030	1.78	.180	1.030	1.78	.180	1.072	1.97	.312	1.107	2.13
16	.939	1.000	.180	1.092	1.84	.180	1.092	1.84	.180	1.135	2.03	.312	1.170	2.19
17	1.001	1.062	.180	1.155	1.91	.180	1.155	1.91	.180	1.197	2.09	.312	1.232	2.25
18	1.063	1.125	.180	1.218	1.97	.180	1.218	1.97	.180	1.260	2.15	.312	1.295	2.32
19	1.126	1.188	.180	1.280	2.03	.180	1.280	2.03	.180	1.322	2.22	.312	1.357	2.38
20	1.189	1.250	.180	1.342	2.09	.180	1.342	2.09	.180	1.385	2.28	.312	1.420	2.44
21	1.251	1.312	.180	1.405	2.16	.180	1.405	2.16	.180	1.447	2.34	.312	1.482	2.50
22	1.313	1.375	.180	1.468	2.22	.180	1.468	2.22	.180	1.510	2.40	.312	1.545	2.57
23	1.376	1.438	.180	1.530	2.28	.180	1.530	2.28	.180	1.572	2.47	.312	1.607	2.63
24	1.439	1.500	.180	1.592	2.34	.180	1.592	2.34	.180	1.635	2.53	.312	1.670	2.69
25	1.501	1.562	.180	1.655	2.41	.180	1.655	2.41	.180	1.697	2.59	.312	1.732	2.75
26	1.563	1.625	.180	1.718	2.47	.180	1.718	2.47	.180	1.760	2.65	.312	1.795	2.82
27	1.626	1.688	.180	1.780	2.53	.180	1.780	2.53	.180	1.822	2.72	.312	1.857	2.88
28	1.689	1.750	.180	1.842	2.59	.180	1.842	2.59	.180	1.885	2.78	.312	1.920	2.94
29	1.751	1.812	.180	1.905	2.66	.180	1.905	2.66	.180	1.947	2.84	.312	1.982	3.00
30	1.813	1.875	.180	1.968	2.72	.180	1.968	2.72	.180	2.010	2.90	.312	2.045	3.07
31	1.876	1.938	.180	2.030	2.78	.180	2.030	2.78	.180	2.072	2.97	.312	2.107	3.13
32	1.939	2.000	.180	2.092	2.84	.180	2.092	2.84	.180	2.135	3.03	.312	2.170	3.19
33	2.001	2.062	.180	2.155	2.91	.180	2.155	2.91	.180	2.197	3.09	.312	2.232	3.25
34	2.063	2.125	.180	2.218	2.97	.180	2.218	2.97	.180	2.260	3.15	.312	2.295	3.32
35	2.126	2.188	.180	2.280	3.03	.180	2.280	3.03	.180	2.322	3.22	.312	2.357	3.38
36	2.189	2.250	.180	2.342	3.09	.180	2.342	3.09	.180	2.385	3.28	.312	2.420	3.44
37	2.251	2.312	.180	2.405	3.16	.180	2.405	3.16	.180	2.447	3.34	—	—	—
38	2.313	2.375	.180	2.468	3.22	.180	2.468	3.22	.180	2.510	3.40	—	—	—
39	2.376	2.438	.180	2.530	3.28	.180	2.530	3.28	.180	2.572	3.47	—	—	—
40	2.439	2.500	.180	2.592	3.34	.180	2.592	3.34	.180	2.635	3.53	—	—	—

11 NOT AVAILABLE IN 2Asp509P-DT06-05, 2Asp509P-DT06-06,
 AND 2Asp509P-DT08-07.

DIMENSIONS IN INCHES

J5	REVISED COMPANY LOGO & UPDATED TRADEMARK INFORMATION. (REF. ECR2670)		
ISSUED	11/01/67	2Asp® FASTENER, ADJUSTABLE PRELOAD-SELF SUSTAINING-POSITIVE MECHANICAL LOCK, 8740 ALLOY STEEL (108 KSI SHEAR)	2AspP()-DT()-() PIN AspF-S-DT() & 2AspP-S-DT() SLEEVES Asp-LC-2AC LOCK COLLAR
REVISED	04/01/2020		ASP102
PAGE	6 OF 6		