

QUICK OPERATING 1/4-TURN FASTENERS 28F SERIES

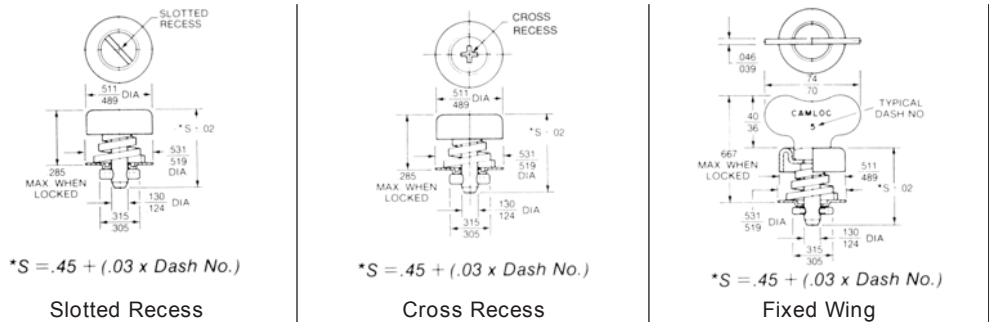
28F Series. Stud Assemblies and Receptacles

Features: Designed for decorative styling.
 • Clip-on receptacle provides high assembly rates. Receptacles have low profile for minimum interior projection.

Specifications: Ultimate tensile strength: 300 lbs.
 Working strength: 200 lbs. Stud grip in increments: .030 inch. For other styles, materials or finishes, contract Camloc Products Division.

Stud Assemblies

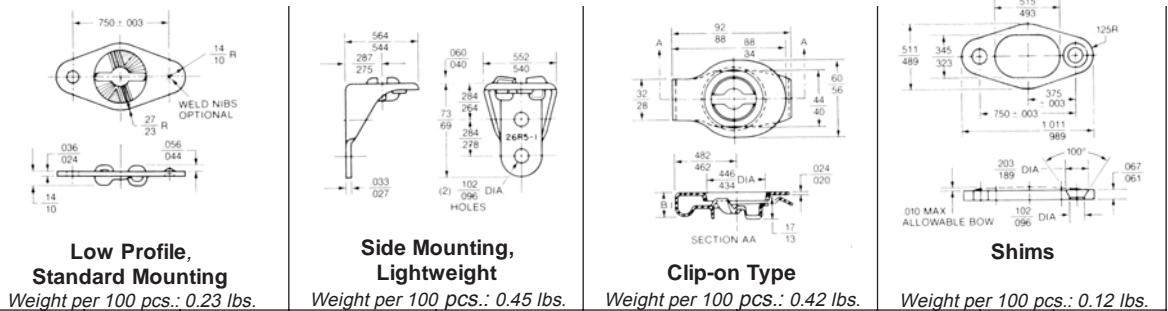
Note: Part numbers shown are basic part numbers only. See ordering information on Page A-36 for required dash numbers.



Material	Part No.	Part No.	Part No.
Stainless Steel	28S11-[]	---	28S7-[]A
Steel (Cadmium Plated)	28S1-[]	28S14-[]	28S7-[]
Steel (Nickel Plated)	28S20-[]	28S19-[]	---

Maximum Service Temperatures: Stainless Steel-750°F.; Steel (Cadmium Plated)-450°F.; Steel (Nickel Plated)-550°F.

Receptacles



Material	Low Profile, Standard Mounting Weight per 100 pcs.: 0.23 lbs.			Side Mounting, Lightweight Weight per 100 pcs.: 0.45 lbs.		Clip-on Type Weight per 100 pcs.: 0.42 lbs.		Shims Weight per 100 pcs.: 0.12 lbs.		
	Part No.	Max. Temp.	Rivet Holes	Part No.	Max. Temp.	Part No.	Max. Temp.	Part No.	Max. Temp.	Rivet Holes
Stainless Steel	312-12A	750°F.	Plain .134 dia. .128	---	---	---	---	---	---	---
	312-12S	750°F.	Plain .102 dia. .096	---	---	---	---	---	---	---
	312-12WS	750°F.	None (Weld Nibs)	---	---	---	---	---	---	---
Steel (Cadmium Plated)	312-12	450°F.	Plain .102 dia. .096	26R5-1	450°F.	28R1-1AA* 28R1-2AA**	450°F. 450°F.	---	---	---
Aluminum Alloy (Anodized)	---	---	---	---	---	---	---	26R8-1	350°F.	Plain
	---	---	---	---	---	---	---	26R8-2	350°F.	C'Sunk†

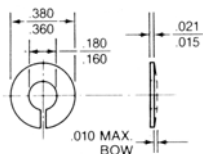
*B Max. = 186
 **B Max. = 201

†Use with dimpled rivet holes.

Retaining Ring.

Order separately.

See page A-58 for installation



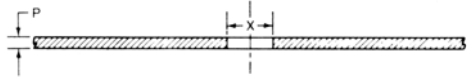
Part No.	Material	Maximum Service Temperature
28S10-1	Stainless Steel	750°F.
28S10-2	Steel (Cadmium Plated)	450°F.

Weight per 100 pcs.: .04 lbs.

QUICK OPERATING 1/4-TURN FASTENERS 28F SERIES

28F Series. Panel Preparation and Installation Data.

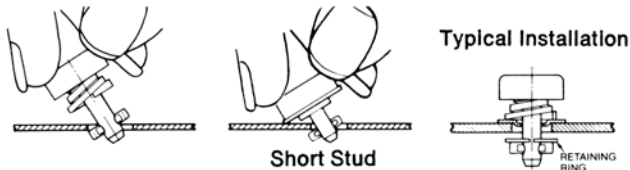
Determine panel thickness "P" and form through hole to corresponding "X" diameter.



"P" panel thickness	"X" dia.
Up to .091	.257
.092 and greater	.312

Installing stud into panel:

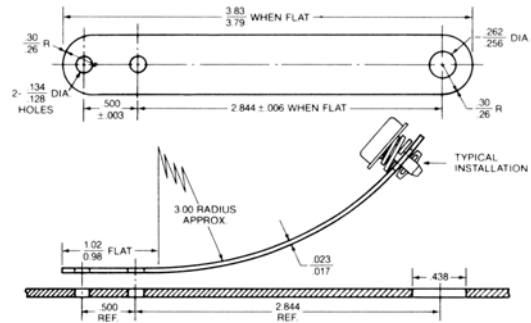
Tilt stud and insert into panel as shown. It may be necessary to compress spring by pressing stud assembly against panel. When cross pin clears, center stud assembly in mounting hole and release. (To remove stud assembly reverse procedure.)



Note: Retaining ring is required for all studs used with .312 inch mounting holes. For .257 inch mounting holes, retaining rings may be omitted where: $P \geq (.030 N) - .100$ P=Panel thickness N=Stud length dash number

Stud Ejector Spring

Provides full retraction of stud assembly to allow opening and closing of equipment without the possibility of jamming or damage.

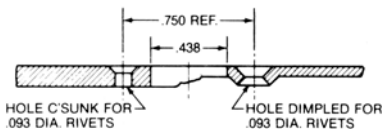


Part No.	Material and Finish	Max. Temp.
2600-E2S	Spring Steel (Cad. Plated)	450°F.

Note: Add .020 to total "G" thickness when using this part. See page A-36 Weight per 100 pcs.: 1.24 lbs.

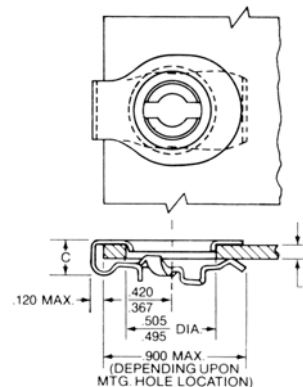
28F Series. Receptacle Installation.

312-12 Series. Standard Mounting

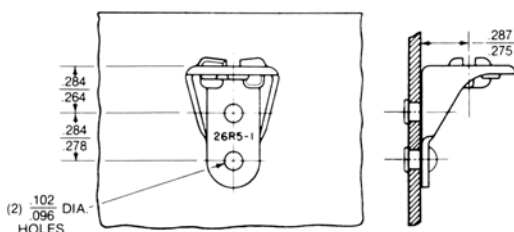


1. Drill #30 (.1285) diameter pilot hole.
2. Drill holes for .093 diameter rivets using drill jig P/N T12.
3. Enlarge pilot hole to .438 diameter using hole saw HS-437.
4. Rivet receptacle in place.

28R Series. Clip-on Receptacle



P/N 26R5 Series. Side Mounting Receptacle



Part No.	F Panel Thickness	C Max.
28R1-1AA	.020-.064	.186
28R1-2AA	.065-.109	.201

Note: Form .505-.495 mounting hole, then slide receptacle over mounting hole to clip in place.

QUICK OPERATING 1/4-TURN FASTENERS 28F SERIES

28F Series. Ordering Information.

To Select Stud Dash Number.

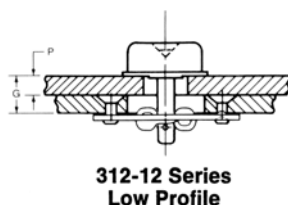
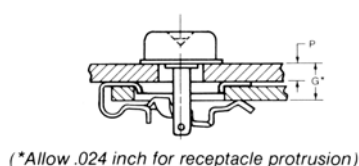
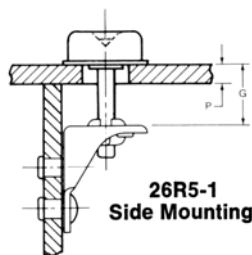
1. Determine "G" thickness as shown below

- Notes:** a) Increase "G" to allow for thickness of paint or other finishes and for the compressed thickness of any gasket.
 b) "G" must be increased for the following "special" conditions:

"Special" Condition	Increase "G" Thickness
2600-E2S Ejector Spring installed	Add .020 inch
26R8 shims Installed	Add .067 inch for each shim used

2. Stud dash number varies with receptacle used. This information must be known before proceeding.
 3. Locate "G" total thickness in the table.
 4. Then find the corresponding stud dash number in the column designated for the selected receptacle.

Important Note: If the total thickness "G" is very near the top of the thickness range, selection of the next greater dash number is recommended. For "G" thicknesses greater than those tabulated, contact Camloc Products Division.



"G" Total Thickness	Stud Dash Number Selection		
	Receptacles		
	26R5	28R1	312-12
.029-.059	—	- 3	—
.060-.089	—	- 4	—
.080-.089	-2	—	- 2
.090-.119	- 3	- 5	- 3
.120-.149	- 4	- 6	- 4
.150-.179	- 5	- 7	- 5
.180-.209	- 6	- 8	- 6
.210-.239	- 7	- 9	- 7
.240-.269	- 8	-10	- 8
.270-.299	- 9	-11	- 9
.300-.329	-10	-12	-10
.330-.359	-11	-13	-11
.360-.389	-12	-14	-12
.390-.419	-13	-15	-13
.420-.449	-14	-16	-14
.450-.479	-15	-17	-15
.480-.509	-16	-18	-16
.510-.539	-17	-19	-17
.540-.569	-18	-20	-18
.570-.599	-19	-21	-19
.600-.629	-20	-22	-20
.630-.659	-21	-23	-21
.660-.689	-22	-24	-22
.690-.719	-23	-25	-23
.720-.749	-24	-26	-24
.750-.779	-25	-27	-25
.780-.809	-26	-28	-26
.810-.839	-27	-29	-27
.840-.869	-28	-30	-28
.870-.899	-29	-31	-29
.900-.929	-30	-32	-30
.930-.959	-31	-33	-31
.960-.989	-32	-34	-32
.990-1.019	-33	-35	-33
1.020-1.049	-34	-36	-34
1.050-1.079	-35	-37	-35
1.080-1.109	-36	-38	-36
1.110-1.139	-37	-39	-37
1.140-1.169	-38	-40	-38
1.170-1.199	-39	-41	-39
1.200-1.229	-40	-42	-40
1.230-1.259	-41	-43	-41
1.260-1.289	-42	-44	-42
1.290-1.319	-43	-45	43
1.320-1.349	-44	-46	-44
1.350-1.379	-45	-47	-45
1.380-1.409	-46	-48	-46
1.410-1.439	-47	-49	-47
1.440-1.469	-48	-50	-48
1.470-1.499	-49	-51	-49
1.500-1.529	-50	-52	-50