

QUICK OPERATING FASTENERS

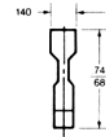
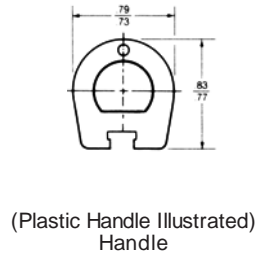
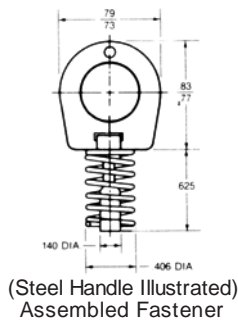
39F/34F SERIES

KM Series. Fastener Selection

Features: Simple. • Low-cost. • Quick operating.
• Designed for hand installation and operation.

• Absorbs shock and vibration. • Ideal for sheet metal panel applications.

May be ordered assembled or components may be ordered separately.
Grip Thickness: .250 max.

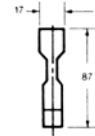
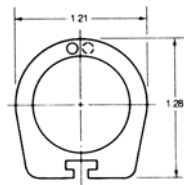
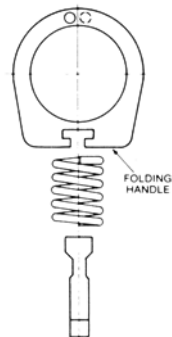


Material	Part No.	Part No.	Part No.	Part No.
Steel	*KM921-1	KM918-1	KM920-1	KM919-1
Plastic, White	**KM1049-1-1AA	KM1050-1-1AA	-	-
Plastic Black	**KM1049-1-1AB	KM1050-1-1AB	-	-

Weights: *.83 lbs., **.63 lbs., (per 100 pcs.)

For medium-duty use with folding handle.

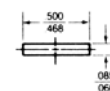
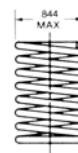
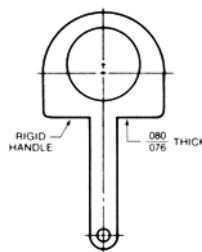
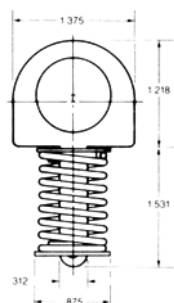
All unassembled components may be ordered with part number KM1040-1-1AA or components may be ordered separately.
Weight: 2.55 lbs., (per 100 pcs.)



Material	Part No.	Part No.	Part No.	Part No.
Steel	KM1040-1-1AA	KM1042-1-1AA	KM640	KM1041-1-1AA

For heavy-duty use with rigid handle.

May be ordered assembled or components may be ordered separately.
Grip Thickness: .600 max.
Weight: 4.14 lbs., (per 100 pcs.)



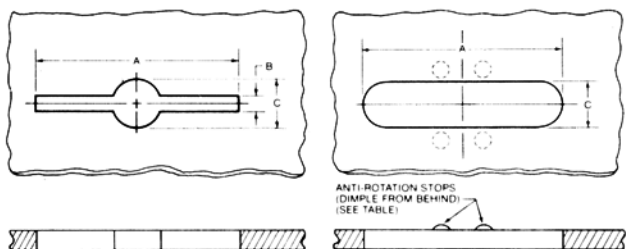
Material	Part No.	Part No.	Part No.	Part No.	Part No.
Steel	KM660	KM628	KM630	KM631	KM638

QUICK OPERATING FASTENERS

KM SERIES

KM Series. Panel Preparation and Installation Data.

Outer Panel Preparation Optional Hole Shapes

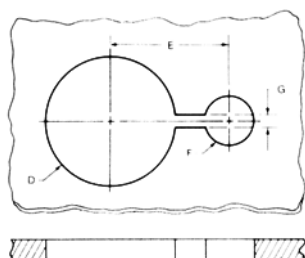


Select desired hole shape and form through hole as shown.

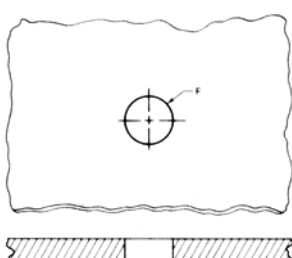
Important Note: Centerline of outer panel hole must be congruent with centerline of substructure hole (small diameter) when outer panel is in closed position.

Dimensions For Outer Panel Preparation				
Series	A Ref.	B Ref.	C Ref.	Anti-Rotation Stops
KM921 and KM1049	.880	.158	.250	Not Required
KM1040	1.300	.190	.350	Not Required
KM660	1.500	.093	.343	Required

Substructure Preparation Hole Shape For Assembled Fastener



Hole Shape For Unassembled Fastener

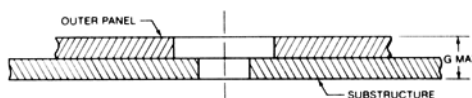


Select hole shape corresponding to installation method and form through hole(s) as shown. See important note above for relative position of outer panel and substructure holes.

Dimensions For Substructure Preparation				
Series	D Dia. Ref.	E Ref.	F Dia. Ref.	G Ref.
KM921 and KM1049	.500	.750	.250	.156
KM1040	Not * Applicable	Not * Applicable	.350	Not * Applicable
KM660	.937	.875	.343	.093

*Note: KM1040 is sold unassembled only.

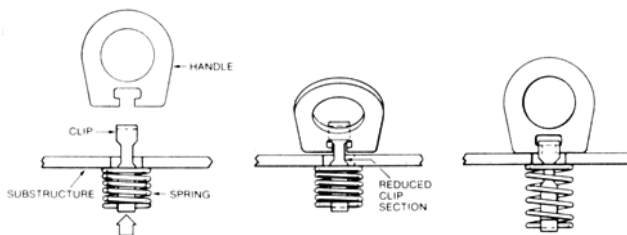
Maximum Grip



KM Series 1/4-turn fasteners will accommodate "G" maximum grip as tabulated below.

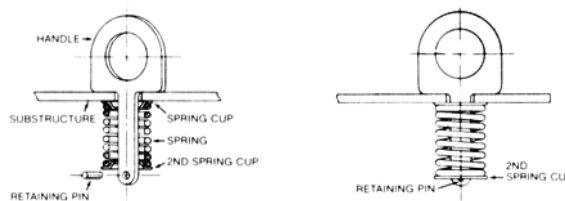
Part Number	"G" Max.
KM921 and KM1049	.250
KM1040	.260
KM660	.600

Installing Unassembled Fasteners/ KM921, KM1040, KM1049



1. Slide spring over clip and insert assembly into substructure hole as shown above.
2. Slide handle over reduced clip section.
3. Release assembly. Fastener is now captivated to substructure. To remove, reverse assembly sequence.

Installing Unassembled Fastener/KM660



1. Insert handle through substructure hole as shown. Then slide spring cup, spring and second spring cup over handle. Install retaining pin and release assembly.
2. Second spring cup will cover and captivate retaining pin. Fastener is now captivated to substructure. To remove, reverse assembly sequence.

Important Note: Observe orientation of spring cups.

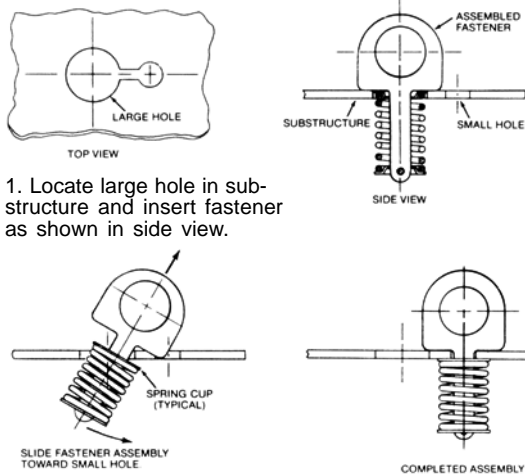
See additional installation on following page.

QUICK OPERATING FASTENERS

KM SERIES

KM Series. Panel Preparation and Installation Data.

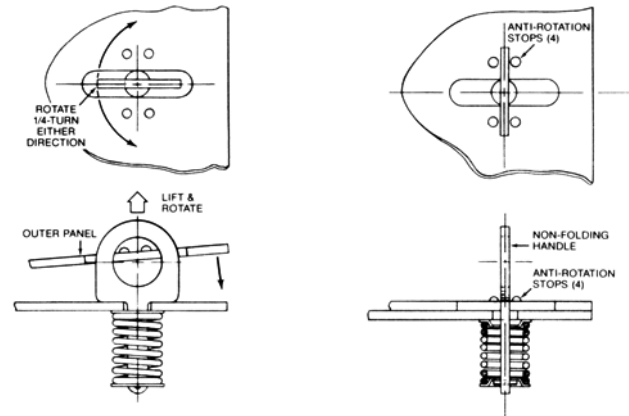
Installing Assembled Fasteners



1. Locate large hole in substructure and insert fastener as shown in side view.

2. Slide fastener assembly over and center in small hole. Be sure spring and spring cup (if any) remain on back side of substructure.

Fastener Operation/KM660

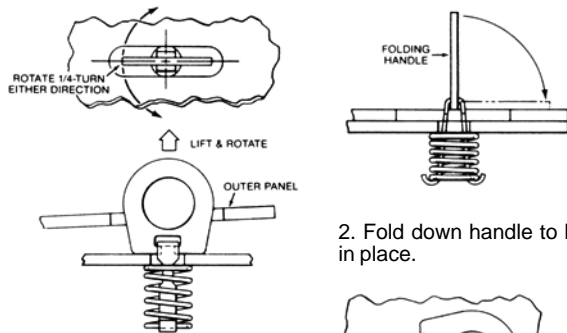


1. Close outer panel. Lift and rotate fastener 1/4-turn in either direction.

2. Center handle between anti-rotation stops. Outer panel is now securely locked in place.

B

Fastener Operation/KM921, KM1040, KM1049



1. Close outer panel. Lift and rotate fastener 1/4-turn in either direction.

2. Fold down handle to lock in place.

3. Outer panel is now securely locked in place.