



Howmet Fastening Systems
 Carson Operations
 900 E. Watson Center Road
 Carson, California 90745 U.S.A.

Phone (310) 830-8200
 HFS_Carson_Engineering@howmet.com

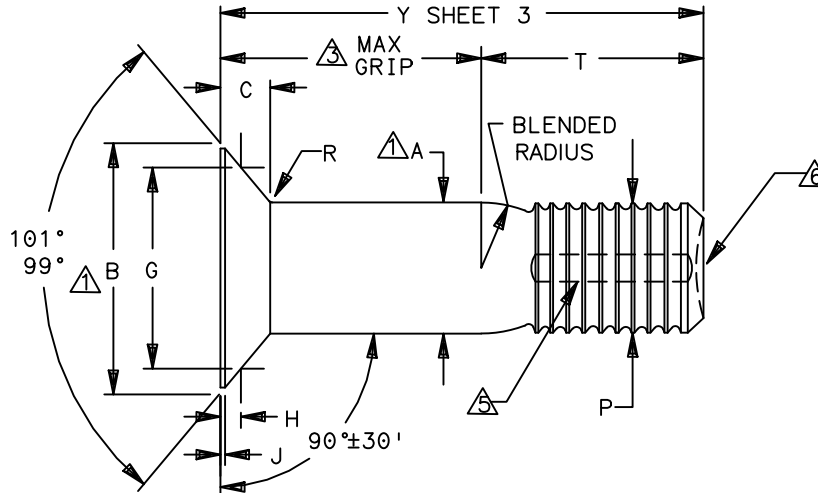
Howmet Fastening Systems
 Us Operations
 Clos D' Asseville BP 30004
 95450 Us Par Vigny France

Phone +33-1-30.27.95.00
 Fax +33-1-34.66.06.00

GP™

ENGINEERING
 STANDARD

THIS DRAWING, THE STRUCTURAL DESIGN DISCLOSED THEREIN AND THE TECHNICAL DATA AND ENGINEERING SERVICE REPRESENTED THEREBY ARE THE EXCLUSIVE PROPERTY OF HUCK INTERNATIONAL INCORPORATED.



GP FAMILY NUMBER	NOM SIZE	A SHANK DIA COATED ±.0005	B THEO INTER DIA MAX	C HEAD HEIGHT MAX	G GAGE DIA ±.0001	H GAGE HEIGHT		J MAX	P DIA MAX	R RAD ±.005	S Δ	T REF
						MAX	MIN					
GPS8TC-DT05-()	.164	.1630	.332	.073	.2831	.0202	.0175	.010	.156	.020	.0045	.288
GPS8TC-DT06-()	.190	.1890	.383	.084	.3271	.0230	.0200	.013	.184	.025	.0045	.333
GPS8TC-DT08-()	.250	.2490	.510	.110	.4319	.0322	.0288	.017	.244	.025	.0045	.417
GPS8TC-DT10-()	.312	.3115	.637	.137	.5450	.0378	.0342	.020	.306	.035	.0045	.534
GPS8TC-DT12-()	.375	.3740	.765	.165	.6581	.0439	.0401	.023	.370	.035	.0060	.600

- Δ CONCENTRICITY: CONICAL SURFACE OF COUNTERSUNK HEAD TO "A" DIAMETER TO BE WITHIN .005 TIR.
- Δ SHANK STRAIGHTNESS: WITHIN "S" VALUES TIR PER INCH OF SHANK LENGTH.
- Δ GRIP LENGTH IS MEASURED FROM THE TOP OF THE HEAD TO THE END OF THE FULL CYLINDRICAL PORTION OF THE SHANK.
- 4 DIMENSION B AND C FOR ENGINEERING REFERENCE ONLY, NOT FOR INSPECTION PURPOSES
- Δ END MAY BE FLAT OR CUPPED. IF CUPPED CHECK "Y" LENGTH TO FLAT AREA OF CUP.

MATERIAL: 8740 ALLOY STEEL
 MINIMUM SHEAR STRENGTH: 95 KSI.
 SURFACE TEXTURE: Ra MAX PER ANSI-B46.1 BEFORE COATING. CONICAL SURFACE OF HEAD, HEAD TO SHANK FILLET RADIUS, SHANK AND TRANSITION RADIUS, -32, OTHER SURFACES -125.

PROCUREMENT SPECIFICATION: NAS1413
 ©1978-2021 HUCK INTERNATIONAL, INC., ALL RIGHTS RESERVED.
 GP IS A TRADEMARK OF HUCK INTERNATIONAL, INC. AND ITS SUBSIDIARIES.

DIMENSIONS IN INCHES

DRAWN BY	DH	FSCM (Cage Code) 17446 - Carson FSCM (Cage Code) F6167 - France
CHECKED BY	HJ	

B2

B ₂	REVISED COMPANY LOGO & UPDATED TRADEMARK INFORMATION.(REF. ECR2779)		
ISSUED	09/19/78	STUMP, GROOVE PROPORTIONED GP™ SWAGE LOCKING - TENSION 100° FLUSH HEAD 8740 ALLOY STEEL. (95 KSI SHEAR)	GPS8TC-DT()-()
REVISED	08/10/21		
PAGE	1 OF 3		GPL119



Howmet Fastening Systems
 Carson Operations
 900 E. Watson Center Road
 Carson, California 90745 U.S.A.

Phone (310) 830-8200
 HFS_Carson_Engineering@howmet.com

Howmet Fastening Systems
 Us Operations
 Clos D' Asseville BP 30004
 95450 Us Par Vigny France

Phone +33-1-30.27.95.00
 Fax +33-1-34.66.06.00

GP™

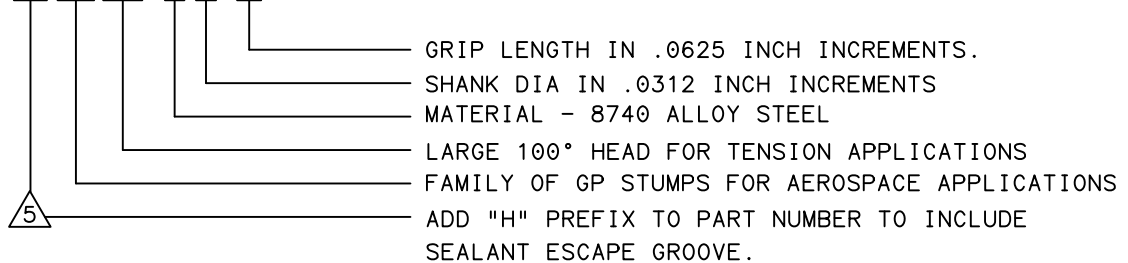
ENGINEERING
 STANDARD

FINISH: NO LETTER = CADMIUM PLATE PER QQ-P-416 TYPEII CLASS 2,
 PLUS CHLORINE FREE CETYL ALCOHOL

HEAD MARKING: HEADS SHALL BE MARKED WITH THE MANUFACTURER'S SYMBOL, BASIC NUMBER (GP8), DEPRESSED .010 MAX, ARRANGEMENT OPTIONAL. FOR STUMPS REQUIRING A SEALANT ESCAPE GROOVE, A DOT (.) MARK WILL ALSO BE INCLUDED ON THE HEAD IDENTIFICATION.

CODING: THE FIRST SET OF LETTERS DESIGNATE THE FAMILY OF GROOVE PROPORTIONED STUMPS FOR AEROSPACE APPLICATIONS (GPS).
 THE SECOND SET OF LETTERS & NUMBER 8TC DESIGNATE HEAD SIZE, STYLE, AND LOAD APPLICATION.
 THE NEXT LETTER "DT", IS THE MATERIAL DESIGNATOR FOR 8740 ALLOY STEEL MIN SHEAR STRENGTH: 95 KSI.
 THE NUMBERS FOLLOWING THE MATERIAL DESIGNATE THE NOMINAL PIN SHANK DIAMETER IN .0312 INCH INCREMENTS.
 THE FINAL NUMBER(S) DESIGNATES THE GRIP LENGTH NUMBER OR THE NOMINAL PIN SHANK LENGTH IN .0625 INCH INCREMENTS.

EXAMPLE: (H)GPS8TC-DT08-06



MECHANICAL PROPERTIES					
GP STUMP PART NUMBER	NOM SIZE	MINIMUM DOUBLE SHEAR POUNDS	COLLAR PART NUMBER	MIN ULTIMATE TENSILE LBS WITH LISTED COLLARS	PIN POSITION SWAGE GAGE
GPS8TC-DT05-()	.164	4010	2TCC-C05 2TC-C05	2180	HG109-05
GPS8TC-DT06-()	.190	5380	2TCC-C06 2TC-C06	2750	HG109-06
GPS8TC-DT08-()	.250	9300	2TCC-C08 2TC-C08	5000	HG109-08
GPS8TC-DT10-()	.312	14600	2TCC-C10 2TC-C10	8300	HG109-10
GPS8TC-DT12-()	.375	21000	2TCC-C12 2TC-C12	12700	HG109-12

DIMENSIONS IN INCHES

B₂

REVISED COMPANY LOGO & UPDATED TRADEMARK INFORMATION. (REF. ECR2779)

ISSUED	09/19/78
REVISED	08/10/21
PAGE	2 OF 3

STUMP, GROOVE PROPORTIONED GP™
 SWAGE LOCKING - TENSION 100° FLUSH HEAD
 8740 ALLOY STEEL. (95 KSI SHEAR)

GPS8TC-DT()-()
 GPL119

THIS DRAWING, THE STRUCTURAL DESIGN DISCLOSED THEREIN AND THE TECHNICAL DATA AND ENGINEERING SERVICE REPRESENTED THEREBY ARE THE EXCLUSIVE PROPERTY OF HUCK INTERNATIONAL INCORPORATED.



Howmet Fastening Systems
 Carson Operations
 900 E. Watson Center Road
 Carson, California 90745 U.S.A.

Phone (310) 830-8200
 HFS_Carson_Engineering@howmet.com

Howmet Fastening Systems
 Us Operations
 Clos D' Asseville BP 30004
 95450 Us Par Vigny France

Phone +33-1-30.27.95.00
 Fax +33-1-34.66.06.00

GP™

ENGINEERING
 STANDARD

THIS DRAWING, THE STRUCTURAL DESIGN DISCLOSED THEREIN AND THE TECHNICAL DATA AND ENGINEERING SERVICE REPRESENTED THEREBY ARE THE EXCLUSIVE PROPERTY OF HUCK INTERNATIONAL INCORPORATED.

GRIP NUMBER TABULATION									
GRIP DASH NO.	MINIMUM PERMISSIBLE GRIP OVERLAP	DESIGN GRIP RANGE		MAXIMUM PERMISSIBLE GRIP OVERLAP	05	06	08	10	12
		MIN	MAX		Y	Y	Y	Y	Y
					±.010	±.010	±.010	±.010	±.010
02	.047	.063	.125	.141	.413	.458			
03	.109	.126	.188	.203	.476	.521	.605	.722	
04	.172	.189	.250	.266	.538	.583	.667	.784	.850
05	.234	.251	.312	.328	.600	.645	.729	.846	.912
06	.297	.313	.375	.391	.663	.708	.792	.909	.975
07	.359	.376	.438	.453	.726	.771	.855	.972	1.038
08	.422	.439	.500	.516	.788	.833	.917	1.034	1.100
09	.484	.501	.562	.578	.850	.895	.979	1.096	1.162
10	.547	.563	.625	.641	.913	.958	1.042	1.159	1.225
11	.609	.626	.688	.703	.976	1.021	1.105	1.222	1.288
12	.672	.689	.750	.766	1.038	1.083	1.167	1.284	1.350
13	.734	.751	.812	.828	1.100	1.145	1.229	1.346	1.412
14	.797	.813	.875	.891	1.163	1.208	1.292	1.409	1.475
15	.859	.876	.938	.953	1.226	1.271	1.355	1.472	1.538
16	.922	.939	1.000	1.016	1.288	1.333	1.417	1.534	1.600
17	.984	1.001	1.062	1.078	1.350	1.395	1.479	1.596	1.662
18	1.047	1.063	1.125	1.141	1.413	1.458	1.542	1.659	1.725
19	1.109	1.126	1.188	1.203	1.476	1.521	1.605	1.722	1.788
20	1.172	1.189	1.250	1.266	1.538	1.583	1.667	1.784	1.850
21	1.234	1.251	1.312	1.328	1.600	1.645	1.729	1.846	1.912
22	1.297	1.313	1.375	1.391	1.663	1.708	1.792	1.909	1.975
23	1.359	1.376	1.438	1.453	1.726	1.771	1.855	1.972	2.038
24	1.422	1.439	1.500	1.516	1.788	1.833	1.917	2.034	2.100
25	1.484	1.501	1.562	1.578	1.850	1.895	1.979	2.096	2.162
26	1.547	1.563	1.625	1.641	1.913	1.958	2.042	2.159	2.225
27	1.609	1.626	1.688	1.703	1.976	2.021	2.105	2.222	2.288
28	1.672	1.689	1.750	1.766	2.038	2.083	2.167	2.284	2.350
29	1.734	1.751	1.812	1.828	2.100	2.145	2.229	2.346	2.412
30	1.797	1.813	1.875	1.891	2.163	2.208	2.292	2.409	2.475
31	1.859	1.876	1.938	1.953	2.226	2.271	2.355	2.472	2.538
32	1.922	1.939	2.000	2.016	2.288	2.333	2.417	2.534	2.600

DIMENSIONS IN INCHES

B₂

REVISED COMPANY LOGO & UPDATED TRADEMARK INFORMATION. (REF. ECR2779)

ISSUED	07/17/18
REVISED	08/10/21
PAGE	3 OF 3

STUMP, GROOVE PROPORTIONED GP™
 SWAGE LOCKING - TENSION 100° FLUSH HEAD
 8740 ALLOY STEEL. (95 KSI SHEAR)

GPS8TC-DT()-()

GPL119